



TOWNIPRENE® LINED PIPE

Industrial Urethane

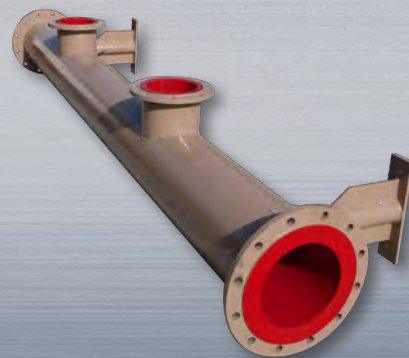
Whether a new build or a re-build, our craftsmen use the same rigorous process to provide you with the best quality lined pipe in the industry. From fabrication of the pipe to your specifications to surface preparation and selection of the proper elastomer followed by custom painting, these industrial-grade lined pipes withstand abrasive and corrosive slurries in suction or discharge service.

The lining is available in a variety of urethane formulations to suite your application, poured to the proper I.D., then through-cured in our temperature-controlled ovens to ensure complete cure.

- Most standard pipe dimensions
- Typical pipe flange selection
- Straight pipe and reducers
- Elbows, wyes, tees
- Manifolds, combiners
- Lining thickens to suit use
- Repairs made to re-lined pipe

Towniprene® is great for sliding abrasion or corrosive media found in chemical, mineral beneficiation, metallurgical coal prep, sand and gravel, clay, kaolin and limestone preparation, and FGD circuits in coal-fired power plants.

- Custom urethane selection and thickness to improve your known wear patterns.
- Improve the OEM design based on your experience and our know-how.
- Factory re-line ensures best adhesion and integrity.



Disclaimer: The information presented herein is a general guide to our products. We make no warranties, expressed or implied with respect to the accuracy or usefulness of the information. Townley reserves the right to change technical information from time to time without notice. Use of any or all information in this document is at the sole discretion and risk of the user. Rev. FIP 6/07

TOWNLEY

Engineering & Manufacturing Co., Inc.



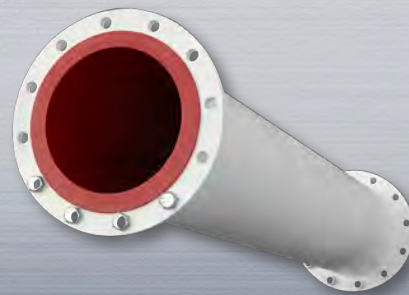
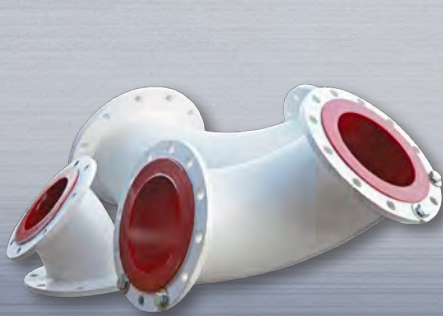
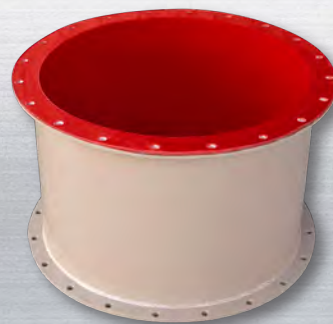
Fabricators cut and weld the pipe to customer's specifications or repair damaged re-lined parts.

If re-lined, old urethane is incinerated first, then abrasive steel media is used to remove oxides and debris from the areas to be lined and to generate aggressive surface texture enhancing mechanical lock-in of urethane.

After applying a proprietary adhesion undercoating, our craftsmen pour the Towniprene® into custom molds. For straight pipe, urethane is poured into pipe and spun to the precise I.D., followed by oven curing to complete the cure.

Flashing is trimmed from the finished part before painting.

Parts ready for paint.



TOWNLEY

Engineering & Manufacturing Co., Inc.

Mail: P.O. Box 221 • Candler, FL 32111 • 10551 SE 110th St. Rd.

Phone: (800) 342-9920 • Fax: (352) 687-1862

www.townley.net

Made in the USA

